

## General information:

- In accordance with: EN 60309-1 and EN 60309-2
- Protection against solids and water: I.P. 44 and I.P. 67
- Fire resistance GWT 850°C (Glow Wire Temperature)
- Heat Resistance 125°C (ball pressure test)
- Dimensional stability: - 25 °C to + 80 °C
- Complies with Directive: 2002/95/CE (RoHs)
- Fast or screw set up connection
- Easy opening system
- Excellent resistance to impact and solidity
- High resistance to abrasion and to diversity of chemicals
- Contacts with high resistance to corrosion
- Halogen free material

## INDUSTRIAL PLUGS

### Screw connection



- Ref. 902131 A** 2P+E, 16A, 230V~, I.P. 44
- Ref. 902142 A** 3P+E, 16A, 400V~, I.P. 44
- Ref. 902152 A** 3P+N+E, 16A, 400V~, I.P. 44
- Ref. 902133 A** 2P+E, 32A, 230V~, I.P. 44
- Ref. 902144 A** 3P+E, 32A, 400V~, I.P. 44
- Ref. 902154 A** 3P+N+E, 32A, 400V~, I.P. 44



- Ref. 902431 A** 2P+E, 16A, 230V~, I.P. 67
- Ref. 902442 A** 3P+E, 16A, 400V~, I.P. 67
- Ref. 902452 A** 3P+N+E, 16A, 400V~, I.P. 67
- Ref. 902433 A** 2P+E, 32A, 230V~, I.P. 67
- Ref. 902444 A** 3P+E, 32A, 400V~, I.P. 67
- Ref. 902454 A** 3P+N+E, 32A, 400V~, I.P. 67



- Ref. 902435 A** 2P+E, 63A, 230V~, I.P. 67
- Ref. 902446 A** 3P+E, 63A, 400V~, I.P. 67
- Ref. 902456 A** 3P+N+E, 63A, 400V~, I.P. 67
- Ref. 902437 A** 2P+E, 125A, 230V~, I.P. 67
- Ref. 902448 A** 3P+E, 125A, 400V~, I.P. 67
- Ref. 902458 A** 3P+N+E, 125A, 400V~, I.P. 67

Note: 230V~ / 50/60 Hz / 3p=6h / 4p + 5p=9h 400V~ / 50/60 Hz / 3p=9h / 4p + 5p=6h / A = Screw connection

## PHASE INVERTER PLUG

Screw connection



- Ref. 936142 A** 3P+E, 16A, 400V~, I.P. 44
- Ref. 936152 A** 3P+N+E, 16A, 400V~, I.P. 44
- Ref. 936144 A** 3P+E, 32A, 400V~, I.P. 44
- Ref. 936154 A** 3P+N+E, 32A, 400V~, I.P. 44

## INDUSTRIAL SOCKETS

Screw connection



- Ref. 903131 A** 2P+E, 16A, 230V~, I.P. 44
- Ref. 903142 A** 3P+E, 16A, 400V~, I.P. 44
- Ref. 903152 A** 3P+N+E, 16A, 400V~, I.P. 44
- Ref. 903133 A** 2P+E, 32A, 230V~, I.P. 44
- Ref. 903144 A** 3P+E, 32A, 400V~, I.P. 44
- Ref. 903154 A** 3P+N+E, 32A, 400V~, I.P. 44



- Ref. 903431 A** 2P+E, 16A, 230V~, I.P. 67
- Ref. 903442 A** 3P+E, 16A, 400V~, I.P. 67
- Ref. 903452 A** 3P+N+E, 16A, 400V~, I.P. 67
- Ref. 903433 A** 2P+E, 32A, 230V~, I.P. 67
- Ref. 903444 A** 3P+E, 32A, 400V~, I.P. 67
- Ref. 903454 A** 3P+N+E, 32A, 400V~, I.P. 67



- Ref. 903435 A** 2P+E, 63A, 230V~, I.P. 67
- Ref. 903446 A** 3P+E, 63A, 400V~, I.P. 67
- Ref. 903456 A** 3P+N+E, 63A, 400V~, I.P. 67
- Ref. 903437 A** 2P+E, 125A, 230V~, I.P. 67
- Ref. 903448 A** 3P+E, 125A, 400V~, I.P. 67
- Ref. 903458 A** 3P+N+E, 125A, 400V~, I.P. 67

Note: 230V~ / 50/60 Hz / 3p=6h / 4p + 5p=9h 400V~ / 50/60 Hz / 3p=9h / 4p + 5p=6h / A = Screw connection

# Industrial plugs and socket-outlets

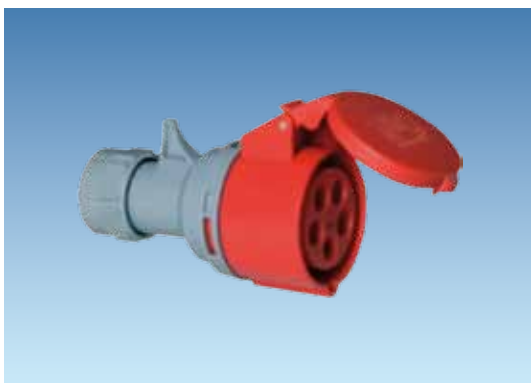
## Fast Screwless connection System

### INDUSTRIAL PLUGS Fast connection system



- Ref. 902131** 2P+E, 16A, 230V~, I.P. 44
- Ref. 902142** 3P+E, 16A, 400V~, I.P. 44
- Ref. 902152** 3P+N+E, 16A, 400V~, I.P. 44
- Ref. 902133** 2P+E, 32A, 230V~, I.P. 44
- Ref. 902144** 3P+E, 32A, 400V~, I.P. 44
- Ref. 902154** 3P+N+E, 32A, 400V~, I.P. 44

### INDUSTRIAL SOCKETS Fast connection system



- Ref. 903131** 2P+E, 16A, 230V~, I.P. 44
- Ref. 903142** 3P+E, 16A, 400V~, I.P. 44
- Ref. 903152** 3P+N+E, 16A, 400V~, I.P. 44
- Ref. 903133** 2P+E, 32A, 230V~, I.P. 44
- Ref. 903144** 3P+E, 32A, 400V~, I.P. 44
- Ref. 903154** 3P+N+E, 32A, 400V~, I.P. 44

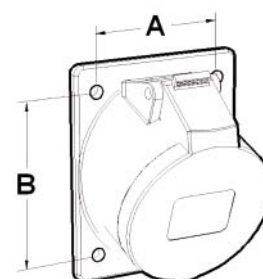
### FLUSH MOUNTED ANGLED INDUSTRIAL SOCKETS Fast connection system



- Ref. 931121** 2P+E, 16A, 230V~, I.P. 44
- Ref. 931142** 3P+E, 16A, 400V~, I.P. 44
- Ref. 931152** 3P+N+E, 16A, 400V~, I.P. 44
- Ref. 931123** 2P+E, 32A, 230V~, I.P. 44
- Ref. 931144** 3P+E, 32A, 400V~, I.P. 44
- Ref. 931154** 3P+N+E, 32A, 400V~, I.P. 44

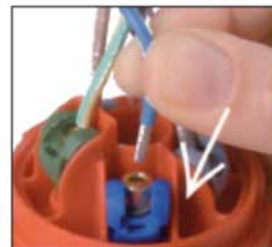
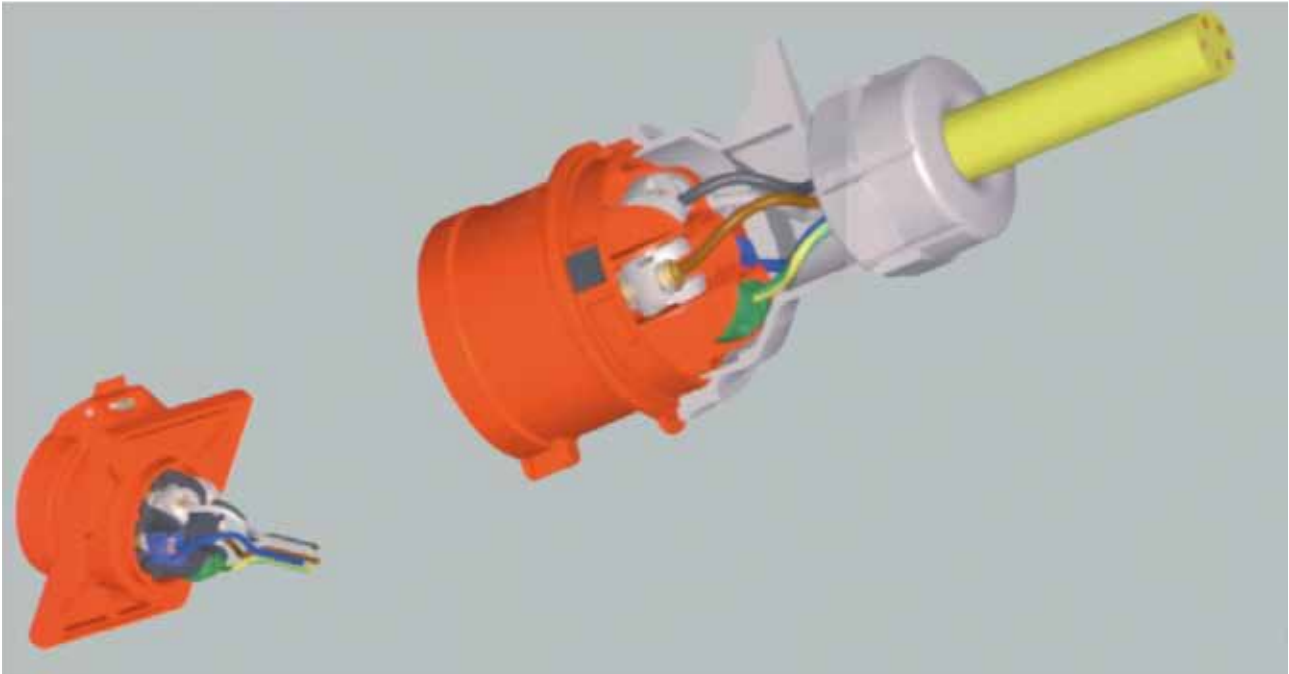
dimensions (mm)

	A	B
<b>Ref. 931121</b>	50	65
<b>Ref. 931142</b>	50	65
<b>Ref. 931152</b>	60	73
<b>Ref. 931123</b>	60	73
<b>Ref. 931144</b>	60	73
<b>Ref. 931154</b>	60	73

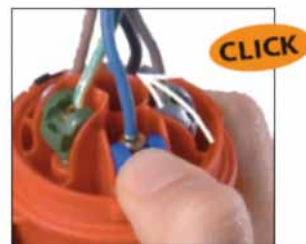


Note: 230V~ / 50/60 Hz / 3p=6h / 4p + 5p=9h 400V~ / 50/60 Hz / 3p=9h / 4p + 5p=6h

## FAST CONNECTION SYSTEM



1. Insert cable



2. Close terminal



3. Re-open terminal

## FITTED ANGLED SOCKET-OUTLET

Screw connection



<b>Ref. 931121 A</b>	2P+E, 16A, 230V~, I.P. 44
<b>Ref. 931142 A</b>	3P+E, 16A, 400V~, I.P. 44
<b>Ref. 931152 A</b>	3P+N+E, 16A, 400V~, I.P. 44
<b>Ref. 931123 A</b>	2P+E, 32A, 230V~, I.P. 44
<b>Ref. 931144 A</b>	3P+E, 32A, 400V~, I.P. 44
<b>Ref. 931154 A</b>	3P+N+E, 32A, 400V~, I.P. 44

A	B
50	65
50	65
60	73
60	73
60	73
60	73



<b>Ref. 931421 A</b>	2P+E, 16A, 230V~, I.P. 67
<b>Ref. 931442 A</b>	3P+E, 16A, 400V~, I.P. 67
<b>Ref. 931452 A</b>	3P+N+E, 16A, 400V~, I.P. 67
<b>Ref. 931423 A</b>	2P+E, 32A, 230V~, I.P. 67
<b>Ref. 931444 A</b>	3P+E, 32A, 400V~, I.P. 67
<b>Ref. 931454 A</b>	3P+N+E, 32A, 400V~, I.P. 67

A	B
50	65
50	65
60	73
60	73
60	73
60	73



<b>Ref. 931435 A</b>	2P+E, 63A, 230V~, I.P. 67
<b>Ref. 931446 A</b>	3P+E, 63A, 400V~, I.P. 67
<b>Ref. 931456 A</b>	3P+N+E, 63A, 400V~, I.P. 67
<b>Ref. 931437 A</b>	2P+E, 125A, 230V~, I.P. 67
<b>Ref. 931448 A</b>	3P+E, 125A, 400V~, I.P. 67
<b>Ref. 931458 A</b>	3P+N+E, 125A, 400V~, I.P. 67

A	B
80	88
80	88
80	88
100	108
100	108
100	108

## FITTED SOCKET-OUTLET 16A

Screw connection



<b>Ref. 931131</b>	2P+E, 16A, 250V~, I.P. 54
<b>Ref. 931431</b>	2P+E, 16A, 250V~, I.P. 67

A	B
38	38
38	38



<b>Ref. 931131 F</b>	2P+E, 16A, 250V~, I.P. 44
----------------------	---------------------------

A	B
38	38

Note: 230V~ / 50/60 Hz / 3p=6h / 4p + 5p=9h 400V~ / 50/60 Hz / 3p=9h / 4p + 5p=6h / A = Screw connection

## FLUSH FITTED PLUGS

Screw connection

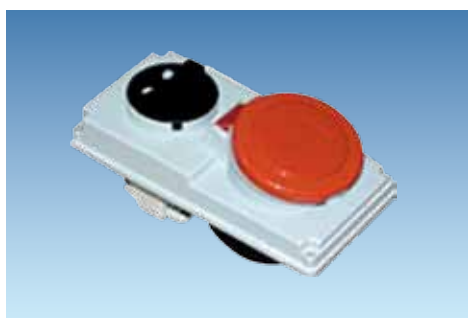


<b>Ref. 934131</b>	2P+E, 16A, 230V~, I.P. 44
<b>Ref. 934142</b>	3P+E, 16A, 400V~, I.P. 44
<b>Ref. 934152</b>	3P+N+E, 16A, 400V~, I.P. 44
<b>Ref. 934133</b>	2P+E, 32A, 230V~, I.P. 44
<b>Ref. 934144</b>	3P+E, 32A, 400V~, I.P. 44
<b>Ref. 934154</b>	3P+N+E, 32A, 400V~, I.P. 44

A	B
56	56
56	56
56	56
56	56
56	56
56	56

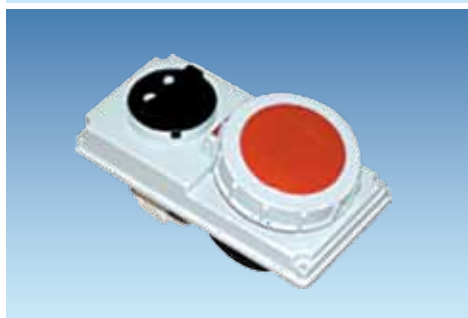
## FITTED INTERLOCKED SOCKET-OUTLET

Screw connection



<b>Ref. 933131</b>	2P+E, 16A, 230V~, I.P. 44
<b>Ref. 933142</b>	3P+E, 16A, 400V~, I.P. 44
<b>Ref. 933152</b>	3P+N+E, 16A, 400V~, I.P. 44
<b>Ref. 933133</b>	2P+E, 32A, 230V~, I.P. 44
<b>Ref. 933144</b>	3P+E, 32A, 400V~, I.P. 44
<b>Ref. 933154</b>	3P+N+E, 32A, 400V~, I.P. 44

A	B
79	169
79	169
79	169
79	169
79	169
79	169






<b>Ref. 933431</b>	2P+E, 16A, 230V~, I.P. 67
<b>Ref. 933442</b>	3P+E, 16A, 400V~, I.P. 67
<b>Ref. 933452</b>	3P+N+E, 16A, 400V~, I.P. 67
<b>Ref. 933433</b>	2P+E, 32A, 230V~, I.P. 67
<b>Ref. 933444</b>	3P+E, 32A, 400V~, I.P. 67
<b>Ref. 933454</b>	3P+N+E, 32A, 400V~, I.P. 67

A	B
79	169
79	169
79	169
79	169
79	169
79	169




Note: 230V~ / 50/60 Hz / 3p=6h / 4p + 5p=9h 400V~ / 50/60 Hz / 3p=9h / 4p + 5p=6h

# Description of fitted socket without & with frame

## I.P. 44 angeled fitted socket with screw connection

				Socket	Socket + frame MR 1316	Socket + frame MR 1332
						
Connections	Amps	Voltage	IP			
2P+E	16	230	44	931121 A	MR 931121 A	
3P+E	16	400	44	931142 A	MR 931142 A	
3P+N+E	16	400	44	931152 A		MR 931152 A
2P+E	32	230	44	931123 A		MR 931123 A
3P+E	32	400	44	931144 A		MR 931144 A
3P+N+E	32	400	44	931154 A		MR 931154 A



## I.P. 67 angeled fitted socket with screw connection

				Socket	Socket + frame MR 1316	Socket + frame MR 1332
						
Connections	Amps	Voltage	IP			
2P+E	16	230	67	931421 A	MR 931421 A	
3P+E	16	400	67	931442 A	MR 931442 A	
3P+N+E	16	400	67	931452 A		MR 931452 A
2P+E	32	230	67	931423 A		MR 931423 A
3P+E	32	400	67	931444 A		MR 931444 A
3P+N+E	32	400	67	931454 A		MR 931454 A



Note: 230V~ / 50/60 Hz / 3p=6h / 4p + 5p=9h 400V~ / 50/60 Hz / 3p=9h / 4p + 5p=6h / A = Screw connection

# Description of fitted socket without & with frame



**I.P. 67 angled fitted socket with screw connection**

				Socket	Socket + frame MR 1363
					
Connections	Amps	Voltage	IP		
2P+E	63	230	67	931435 A	MR 931435 A
3P+E	63	400	67	931446 A	MR 931446 A
3P+N+E	63	400	67	931456 A	MR 931456 A

**I.P. 54 / I.P. 67 fitted schuko socket with screw connection**

				Base	Base + frame MR 1360
					
Connections	Amps	Voltage	IP		
2P+E	16	250	54	931131	MR 931131
2P+E	16	250	67	931431	MR 931431
2P+E	16	250	54	931131 F	MR 931131 F

**I.P. 44 fitted plugs with screw connection**

				Plug	Plug + frame MR 1316
					
Connections	Amps	Voltage	IP		
2P+E	16	230	44	934131	MR 934131
3P+E	16	400	44	934142	MR 934142
3P+N+E	16	400	44	934152	MR 934152
2P+E	32	230	44	934133	MR 934133
3P+E	32	400	44	934144	MR 934144
3P+N+E	32	400	44	934154	MR 934154

Note: 230V~ / 50/60 Hz / 3p=6h / 4p + 5p=9h 400V~ / 50/60 Hz / 3p=9h / 4p + 5p=6h / A = Screw connection



# Description of fitted interlocked socket-outlet without & with frame

I.P. 44 / I.P. 67 fitted interlocked socket-outlet with screw connection

Socket

Socket + frame  
MR 1300 X

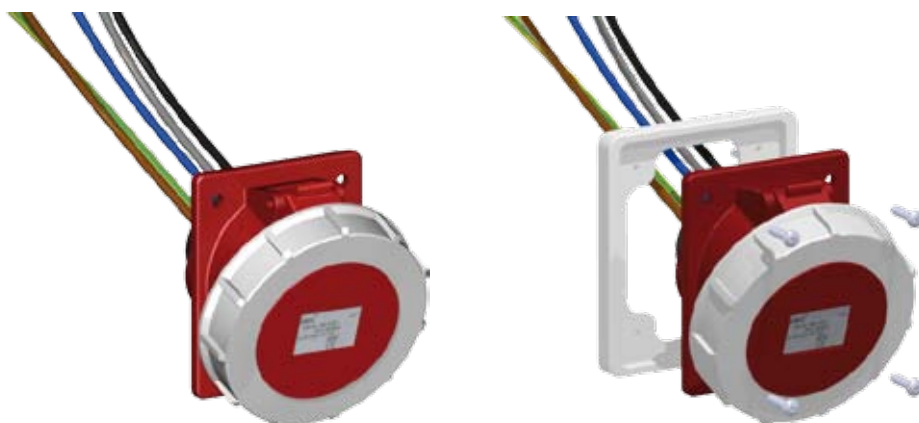


Connections	Amps	Voltage	IP		
2P+E	16	230	44	933131	MR 933131
3P+E	16	400	44	933142	MR 931142
3P+N+E	16	400	44	933152	MR 931152
2P+E	32	230	44	933133	MR 931133
3P+E	32	400	44	933144	MR 933144
3P+N+E	32	400	44	933154	MR 933154
2P+E	16	230	67	933431	MR 933431
3P+E	16	400	67	933442	MR 933442
3P+N+E	16	400	67	933452	MR 933452
2P+E	32	230	67	933433	MR 933433
3P+E	32	400	67	933444	MR 933444
3P+N+E	32	400	67	933454	MR 933454

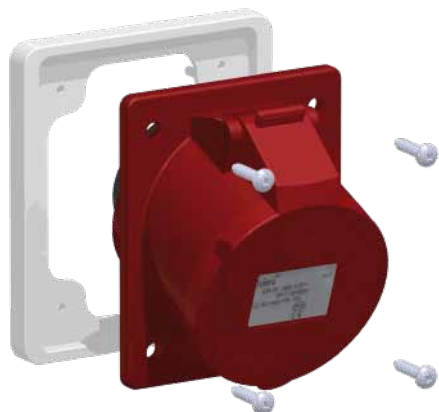
Note: 230V~ / 50/60 Hz / 3p=6h / 4p + 5p=9h 400V~ / 50/60 Hz / 3p=9h / 4p + 5p=6h

## CABLED SOCKETS WITH OR WITHOUT FRAME

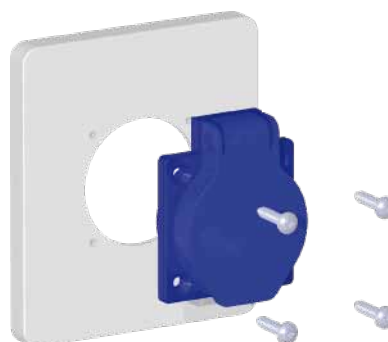
It is possible to request the sockets with the cables. The length of the cables will be 70 cm; the section of the cable will be the same as that assigned. To include the cables the letter "C" will have to be added after the reference number, for example, reference **931144 AC** will become (931144 A + Cable), see drawing. It is also possible to request the socket with cable and with frame; you will therefore have to add "C" to the reference, it will therefore become **MR 931144 AC** (see drawing).



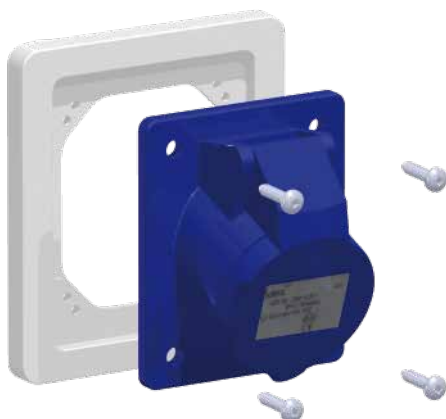
# Examples of mounting frames and sockets



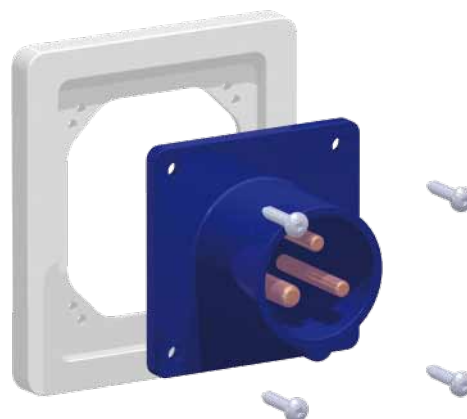
Ref. MR 931144 = Frame MR 1332 + Socket



Ref. MR 931131 = Frame MR 1360 + Socket 931131



Ref. MR 931121 = Frame MR 1316 + Socket 931121



Ref. MR 934133 = Frame MR 1316 + Socket 934133



Ref. MR 933433 = Frame MR 1300 X + Socket 933433



Ref. MR 931423 A = Frame MR 1363 + Socket 931423 A

## SURFACE MOUNTED SOCKET

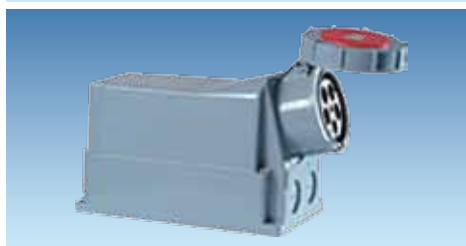
### Screw connection



<b>Ref. 932131</b>	2P+E, 16A, 230V~, I.P. 44
<b>Ref. 932142</b>	3P+E, 16A, 400V~, I.P. 44
<b>Ref. 932152</b>	3P+N+E, 16A, 400V~, I.P. 44
<b>Ref. 932133</b>	2P+E, 32A, 230V~, I.P. 44
<b>Ref. 932144</b>	3P+E, 32A, 400V~, I.P. 44
<b>Ref. 932154</b>	3P+N+E, 32A, 400V~, I.P. 44



<b>Ref. 932435</b>	2P+E, 63A, 230V~, I.P. 67
<b>Ref. 932446</b>	3P+E, 63A, 400V~, I.P. 67
<b>Ref. 932456</b>	3P+N+E, 63A, 400V~, I.P. 67



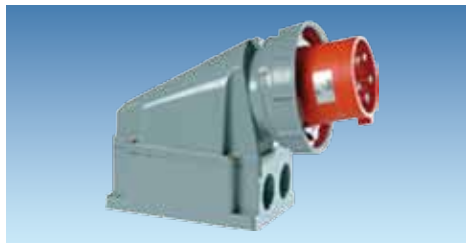
<b>Ref. 932437</b>	2P+E, 125A, 230V~, I.P. 67
<b>Ref. 932448</b>	3P+E, 125A, 400V~, I.P. 67
<b>Ref. 932458</b>	3P+N+E, 125A, 400V~, I.P. 67

## SURFACE MOUNTED PLUGS

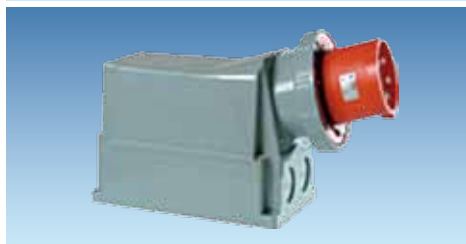
### Screw connection



<b>Ref. 935131</b>	2P+E, 16A, 230V~, I.P. 44
<b>Ref. 935142</b>	3P+E, 16A, 400V~, I.P. 44
<b>Ref. 935152</b>	3P+N+E, 16A, 400V~, I.P. 44
<b>Ref. 935133</b>	2P+E, 32A, 230V~, I.P. 44
<b>Ref. 935144</b>	3P+E, 32A, 400V~, I.P. 44
<b>Ref. 935154</b>	3P+N+E, 32A, 400V~, I.P. 44



<b>Ref. 935446</b>	3P+E, 63A, 400V~, I.P. 67
<b>Ref. 935456</b>	3P+N+E, 63A, 400V~, I.P. 67



<b>Ref. 935448</b>	3P+E, 125A, 400V~, I.P. 67
<b>Ref. 935458</b>	3P+N+E, 125A, 400V~, I.P. 67

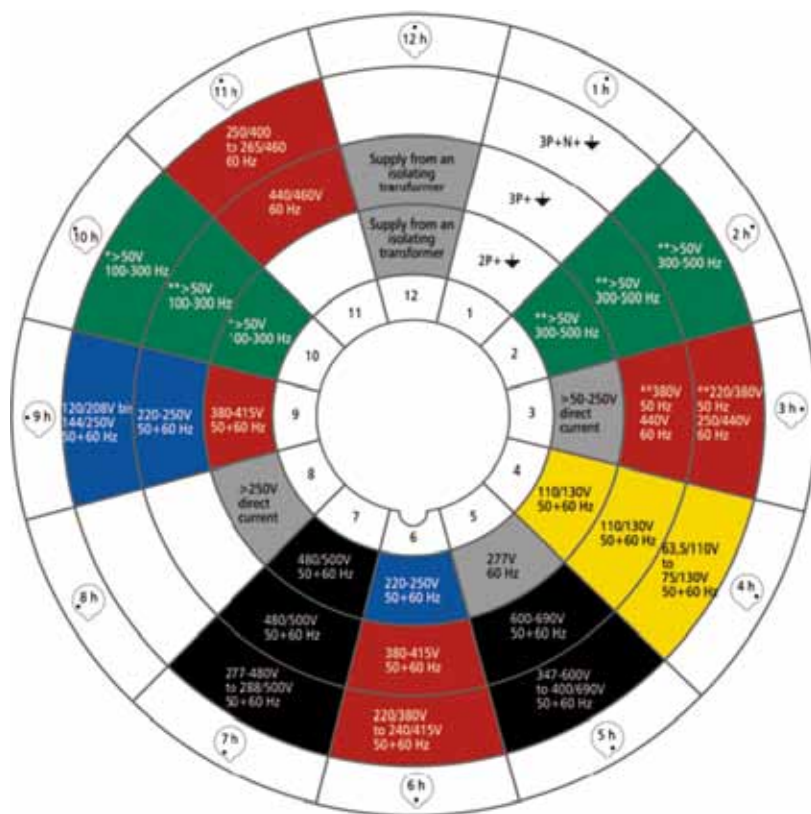
Note: 230V~ / 50/60 Hz / 3p=6h / 4p + 5p=9h 400V~ / 50/60 Hz / 3p=9h / 4p + 5p=6h

## WALL INTERLOCKED SOCKET-OUTLET Screw connection



Ref. 933456 3P+N+E, 63A, 400V~, I.P. 67

## TECHNICAL CHARACTERISTICS



\* Without standard version  
\*\* Without standard version for 63A and 125A

Assigned working tension (V)	Colour <sup>(1)</sup>
20 a 25	Violet
40 a 50	White
100 a 130	Yellow
200 a 250	Blue
380 a 480	Red
500 a 600	Black

<sup>(1)</sup> For the 60 to 500 Hz frequencies inclusive, the green colour can be combined with the colour indicated by the assigned working tension