

Description & characteristics

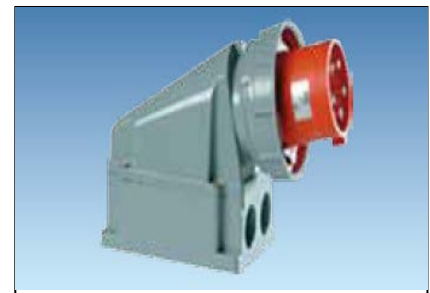
- Surface Mounted Plugs
- 16A to 125A
- 230V to 400V
- IP44 to IP67
- Dimensional stability : -25°C to +80°C

References

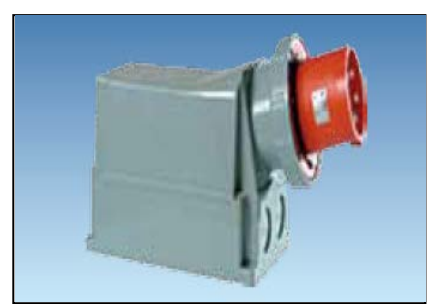
REF	Description	AMPS	IP	Volts	PACK	CARTON
935131	2P+E	16	44	230	1	10
935142	3P+E	16	44	400	1	10
935152	3P+N+E	16	44	400	1	10
935133	2P+E	32	44	230	1	10
935144	3P+E	32	44	400	1	10
935154	3P+N+E	32	44	400	1	10



REF	Description	AMPS	IP	Volts	PACK	CARTON
935446	3P+E	63	67	400	1	10
935456	3P+N+E	63	67	400	1	10



REF	Description	AMPS	IP	Volts	PACK	CARTON
935448	3P+E	125	67	400	1	10
935458	3P+N+E	125	67	400	1	10



Specifications

- Directive 2014/35/UE. Low Voltage Electro technical Regulations
- Norm EN 60309-1, EN 60309-2
- Directive 2002/95/CE (RoHS)

Technical data

- Fire Resistance GWT 850°C (Glow Wire Temperature)
- Heat resistance 125°C (Ball pressure test)
- Insulating material halogen free

